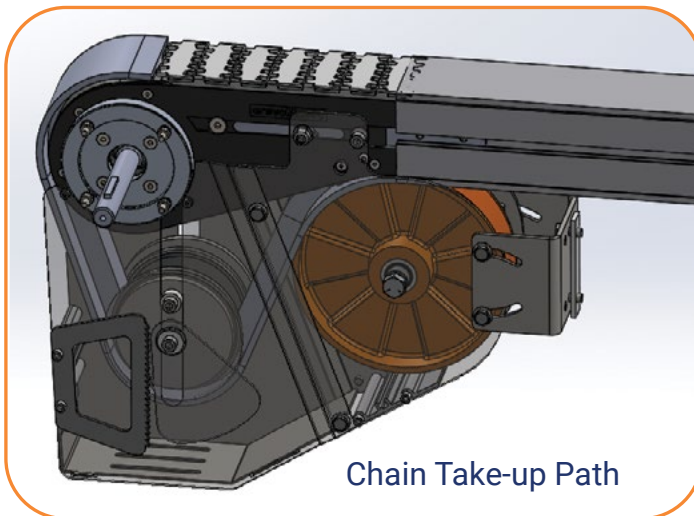
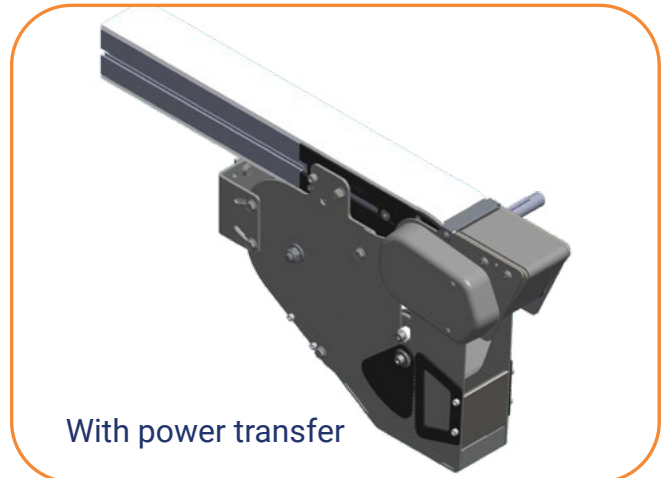
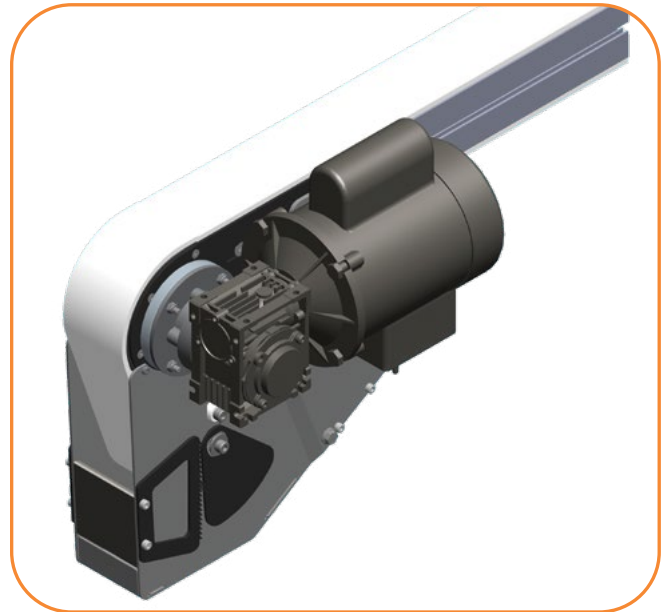


## WEIGHTED TAKE-UP DIRECT DRIVE MODULE

- Weighted Take-up Direct Drive module provides controlled chain take-up for improved conveyor performance
- Compact design fits in similar space as standard direct drive modules
- Smooths conveyor chain movement by helping to eliminate micro-surfing
- Suggested for conveyors over 12.2 m (40 ft) in length
- Capable of inclined and declined arrangement up to 30 degrees
- Improves operator safety by enclosing chain catenary

### FEATURES & SPECIFICATIONS

- Available on Flexmove Aluminum Conveyors: 65 mm, 85 mm, 105 mm, 150 mm, 180 mm and 260 mm wide
- Size: 492mm long x 404 mm high
- Minimum top of chain: 500 mm
- Maximum conveyor length: 30 M (98 ft)
- Maximum conveyor speed: 58 M/min (190 ft/min)
- Capable of inclines up to 30 degrees
- Includes support stand mounting bracket



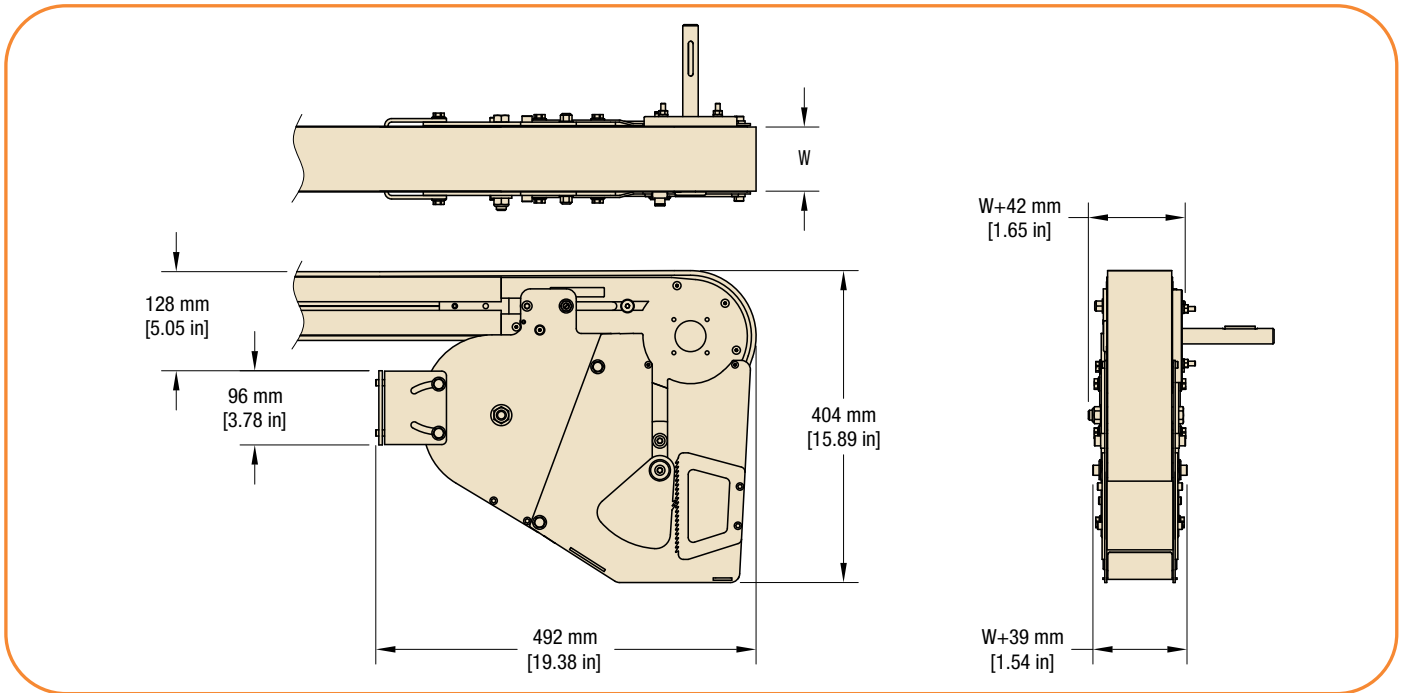
## DIMENSIONS

Part Number:

208246-WWW

Where: WWW = 065, 085, 105, 150, 180, 260

Conveyor beam and standard direct drive tail not included. Weighted take-up module bolts directly to standard direct drive tail.



Note: Drive unit and idler selection to be consult upon ordering. Dorner reserves the right to make alteration without prior notification. Every care has been taken to ensure the accuracy of the information contained in this catalogue, but no liability can be accepted for any error or omissions

## TRANSFORMING CONVEYOR AUTOMATION

### Dorner – North & South America

Dorner Mfg. Corp.  
USA  
+1-262-367-7600

Dorner Conveyors Ltd.  
Canada  
+1-289-208-7306

Dorner Latin America,  
S. de R.L. de C.V.  
+52.33.30037400

**DORNER**<sup>®</sup>  
By Columbus McKinnon

### Dorner – Europe

Dorner GmbH–Germany  
+49 (0) 2461/93767-0

Dorner SARL–France  
+33 (0)1 84 73 24 27

### Dorner – Asia

Dorner (M) Sdn. Bhd.  
Malaysia  
+604-626-2948

[dornerconveyors.com](http://dornerconveyors.com)

© Dorner Mfg. Corp. 2024.  
All Rights Reserved.  
851-970 0924