

2200 & 3200 Series Backlit Conveyors

DORNER[®]
By Columbus McKinnon

Illuminated Conveyors for Visual Inspection and Quality Control

- Provides enhanced contrast between product and conveyor belt for visual inspection and vision system interface
- Light fixture is installed inside the conveyor frame and emits light through a translucent belt
- Parts can be stopped directly over the lighted section or continue through uninterrupted

FEATURES & SPECIFICATIONS

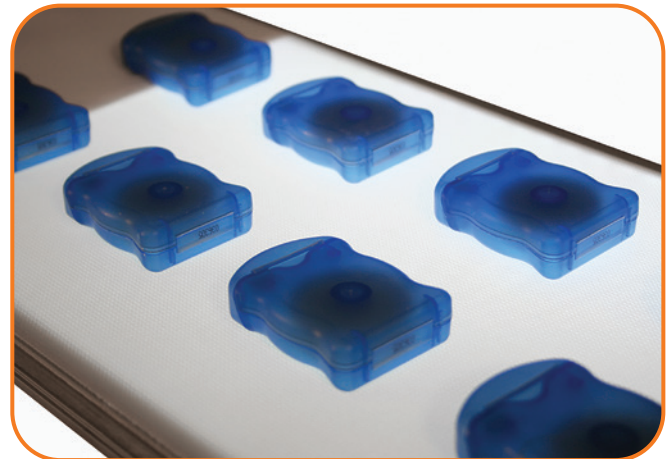
- Available on Dorner 2200 & 3200 Series belt conveyors
- Sanitary Backlit conveyors also available. Contact factory for details
- Aluminum extruded frame with T-Slot construction
- Sealed ball bearings
- Translucent belting with fused finger splice
- Reference the conveyor specification sheet or www.dornerconveyors.com for additional details and specifications

BACKLIT SPECIFICATIONS

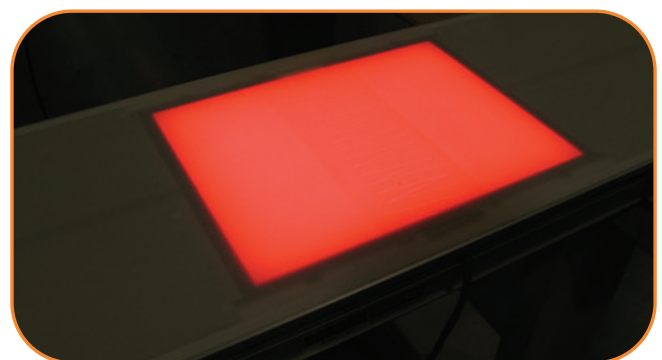
- LED Edge-lit light panels
- Multiple color options available including white, red, blue, and green
- Light fixture is installed inside of the conveyor frame
- Light sizes vary based on application

OPTIONS & ACCESSORIES

- Standard support stands and guiding options are available
- All standard 2200 & 3200 Series mounting packages and gearmotors are available



Ideal for a variety of products



Variety of Light Colors Available

TRANSFORMING CONVEYOR AUTOMATION

Dorner – North & South America

www.dornerconveyors.com

Dorner Mfg. Corp.
(262) 367-7600
info@dorner.com

Dorner Conveyors Ltd.
(289) 208-7306
info@dorner.com

Dorner Latin America, S. de R.L. de C.V.
+52.33.30037400
info.latinamerica@dorner.com

Online Configurator

