

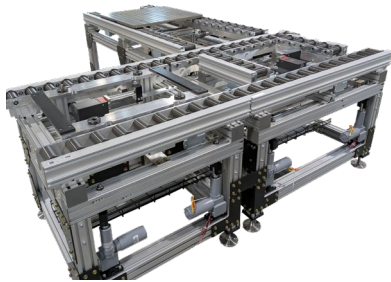
INTELLIGENT MOTION CONVEYOR SOLUTIONS

New from



ERT350 Heavy Duty Pallet System

The new ERT350 from Dorner is a robust pallet system for large-scale manufacturing. Perfect for appliance, automotive, and battery production, it utilizes a unique locate and drop mechanism that allows it to handle increased load from force by transferring weight to frame and ground.

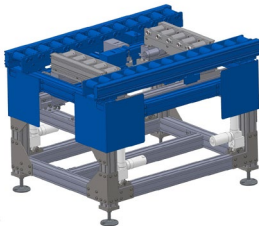
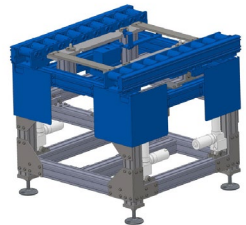


ERT350 Benefits:

- Pallet Sizes from 800x800 mm to 1200x1200 mm
- 1,000 lbs. load for pallet.
- Conveyor drops onto a ridge & precise locate unit mounted directly to the floor, providing a greater working capacity
- Drop linear actuators are 24VDC, made by Duff Norton

Drop & Locate

Utilizing Duff-Norton's actuators, the ERT350's conveyor drop once located by pallet stops. This allows the weight of external force to exceed the pallet weight, for tough applications as riveting, pressing, and torquing bolts.



Drop & Transfer

The ERT350 transfer units work in the opposite way as compared to our standard "lift & Locates". The mainline conveyor drops utilizing Duff-Norton's actuators while the transfer conveyor remains in place.

Explore the Advantages of the ERT350

Visit our website to learn more about the ERT350 and how it can fit in your heavy duty application.



CONVEYANCE SOLUTIONS

DORNER

GARVEY



MAGNETEK

montratec